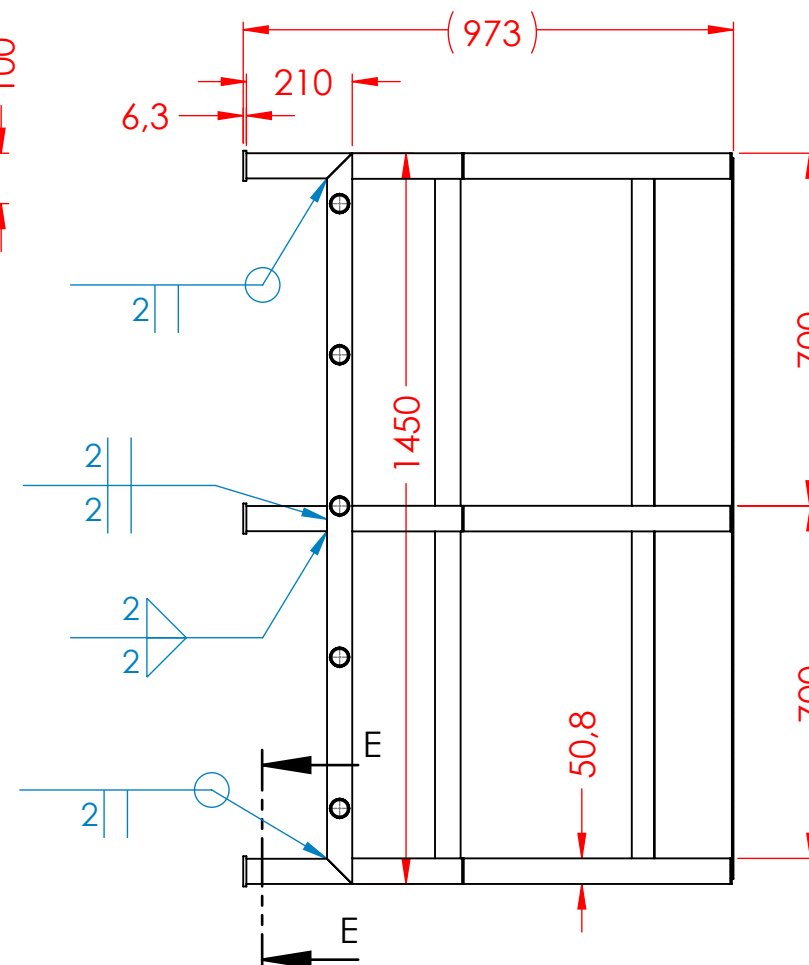
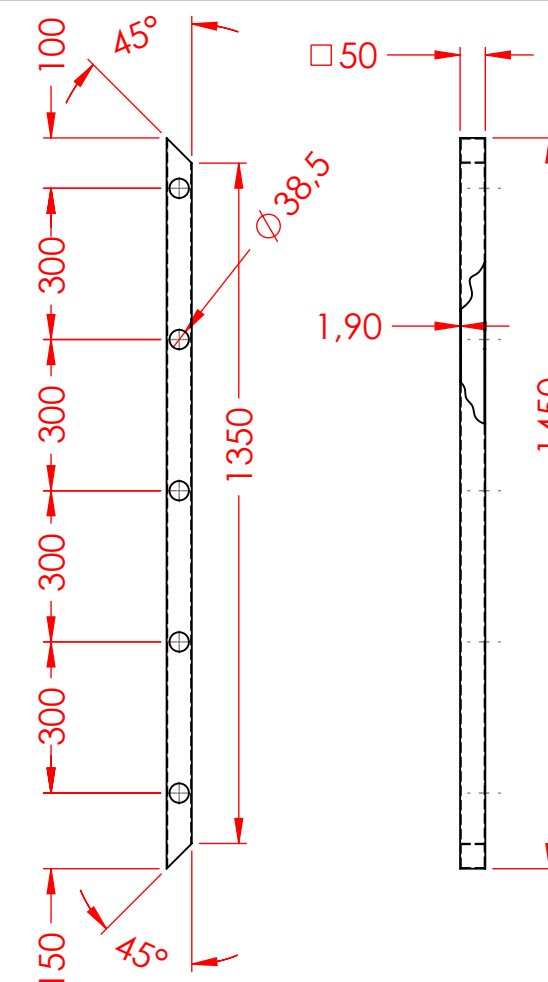


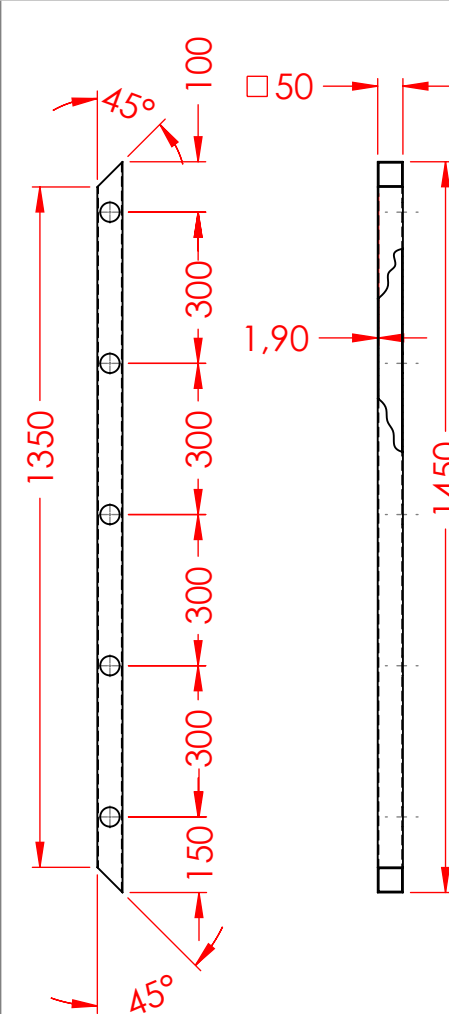
SEÇÃO C-C



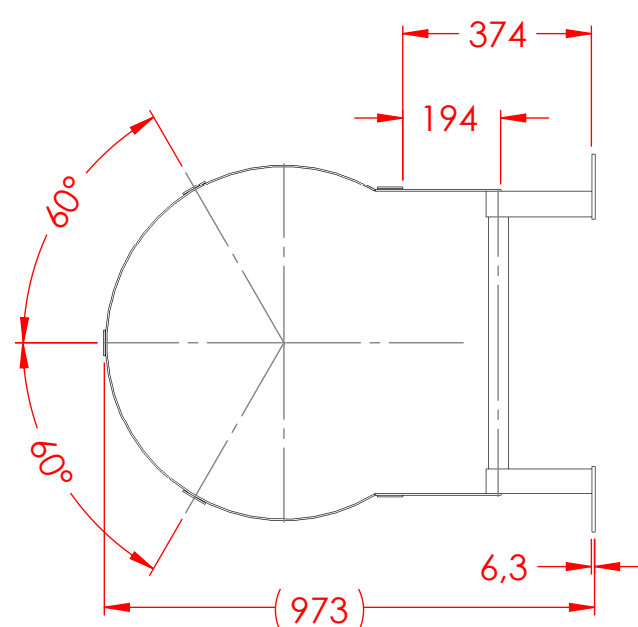
SEÇÃO D-D



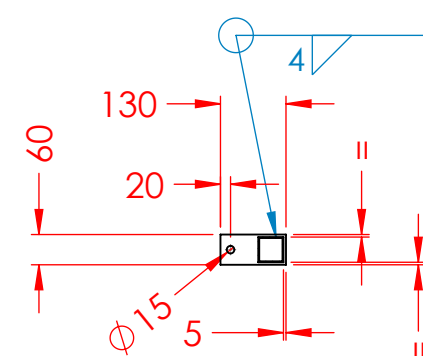
Pos.: 1



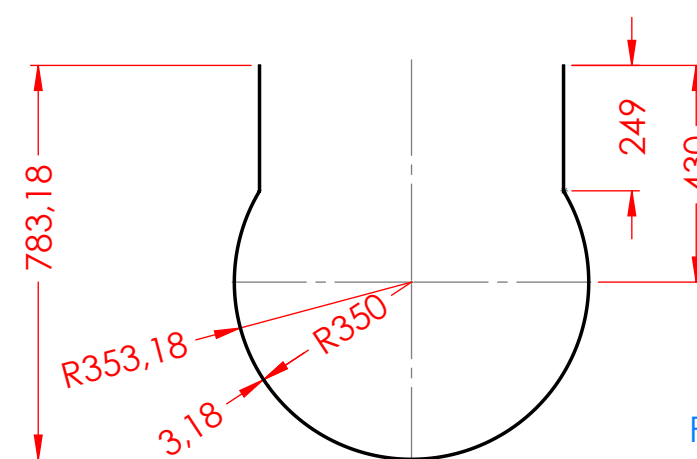
Pos.: 2



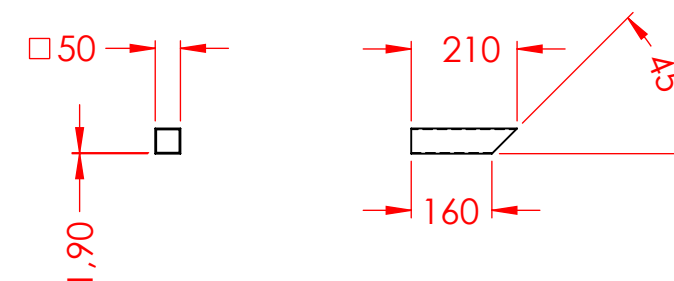
SEÇÃO A-A



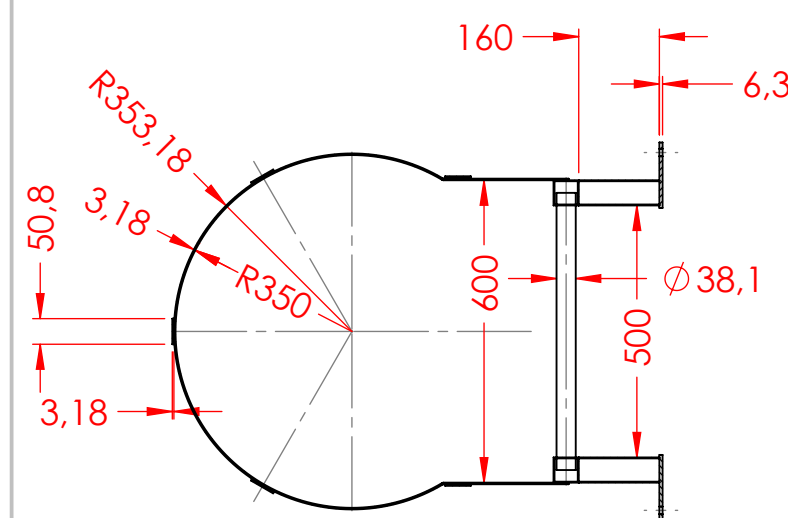
SEÇÃO E-E



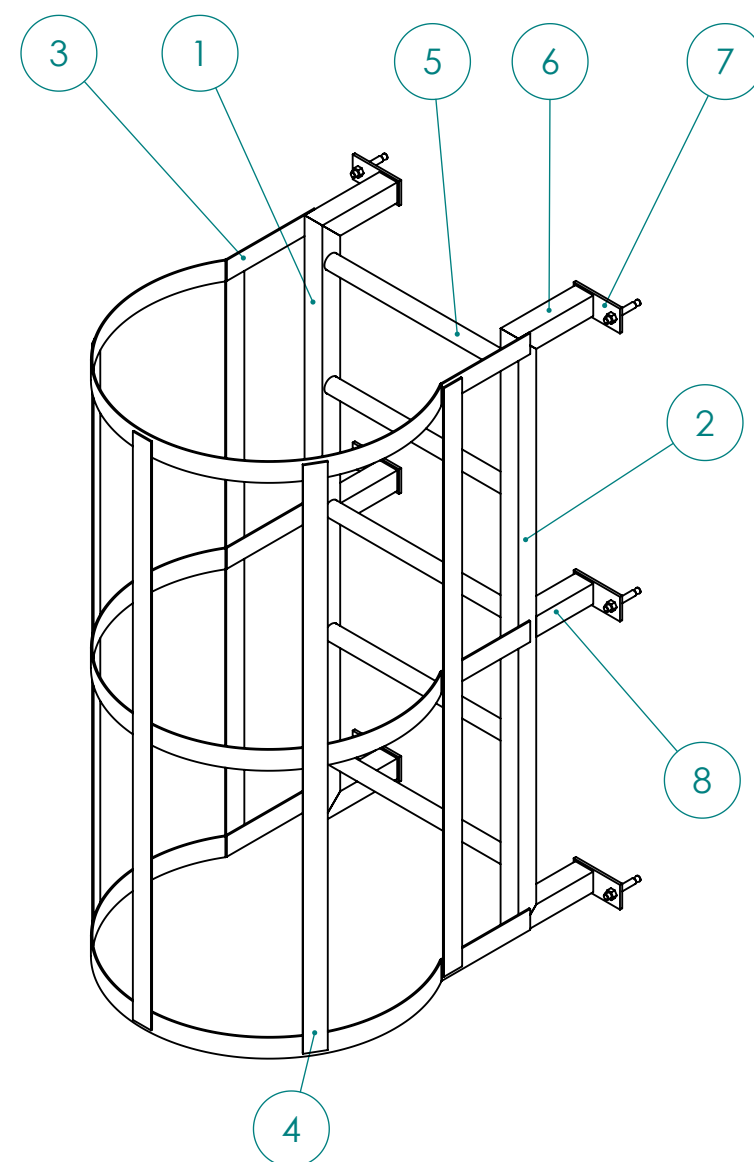
Pos.: 3



Pos.: 6



SEÇÃO B-B



- Soldas conforme norma AWS-A2.4;
- Pintura conforme documento Temo de Referência em anexo;
- Massa aprox. do conjunto soldado: 42 kg.

ITEM	MATERIAL	DIMENSÃO (mm)	MASSA (kg)	QTD.
1	Tubo Quadrado SAE 1008 C/Cost NBR 8261	50x50x1,9x1450	4,0	1
2	Tubo Quadrado SAE 1008 C/Cost NBR 8261	50x50x1,9x1450	4,0	1
3	Barra Chata SAE 1020 / ASTM A36	50,8x3,18x1985	7,6	3
4	Barra Chata SAE 1020 / ASTM A36	50x50x3,18x1430	9,3	5
5	Tubo Redondo C/Cost ASTM A53	D38,1x3,75x550	8,8	5
6	Tubo Quadrado C/Cost NBR 8261	50x50x4,75x210	5,2	4
7	Barra Chata SAE 1020 / ASTM A36	63,5x60x130	2,3	6
8	Tubo Quadrado SAE 1008 C/Cost NBR 8261	50x50x1,9x160	0,92	2

Nº	Revisão	Data	Logomarca da consultora	COMPANIA CATARINENSE DE ÁGUAS E SANEAMENTO
1	Alteração de espessuras e normas dos itens 1,2,3,4,5,6 e 8.	01/2015	GOPS	Sistema SRO/GOPS
	Alteração de norma do item 7.			Localidade - Município CHAPECÓ
	Massa do conjunto era 65 kg.			Projeto Mecânico
				ESCADA MARINHEIRO
				MÓDULO INTERMEDIÁRIO
			Nº da consultora	Projeto JUARES
				Vistos
				Desenho JUARES
				Data 04/2014
				FOLHA Nº
				07115-SAA-RES-ESP-0020-B